

February 22-24, 2022 | Boston, MA

www.mitochondria-targets.com

BOOK BY FRIDAY,
NOVEMBER 19
TO SAVE UP TO
\$1,000



2nd Annual

Mitochondria-Targeted Drug Development

Overcome the Challenge of Treating Unmet Medical Needs Caused by Mitochondrial Dysfunction

Expert Speakers Include:



Selvaraj Nataraja
Senior Director,
Translational
Research
Mitobridge/Astellas



Natalie Yivgi Ohana
Co-Founder & Chief
Executive Officer
Minovia



Ellen Donnelly
Chief Executive
Officer
Abliva



Gregory Flesher
President & Chief
Executive Officer
Reneo Pharma



Reenie McCarthy
Chief Executive
Officer
**Stealth
Biotherapeutics**

Great key speakers that touched on a broad range of subjects. It was very informative and interesting to see how many disease areas mitochondria is being targeted

Scientific Associate, Novartis, Previous Attendee

(+1) 617 455 4188 @ info@hansonwade.com

www.mitochondria-targets.com



WELCOME

SPEAKERS

AGENDA

PARTNER WITH US

REGISTER YOUR PLACE

Welcome to the 2nd Annual Mitochondria-Targeted Drug Development Summit

Accelerating the Discovery & Development of Novel Drugs that Target Mitochondrial Functions for Chronic, Primary Mitochondrial Diseases, Muscular Dystrophy, Metabolic Disorders & Neurodegenerative Diseases

We are pleased to announce that the **Mitochondria-Targeted Drug Development Summit**, focused on the pursuit for novel effective therapies for mitochondrial disorders/dysfunction, will be delivered in-person, for its 2nd edition.

Incorporating insights from leading academics and pioneering biotech, this forum will specifically focus on targeting mitochondrial dysfunction to develop therapies for chronic diseases caused by **mitochondrial DNA mutation/nuclear DNA mutations, muscle dystrophy diseases/muscle loss, metabolic disorders, neurodegenerative disease**, and conditions linked to **oxidative damage**.

From basic research to the clinic, this year's meeting will examine novel **pre-clinical animal modelling** solutions specifically targeting mitochondria, deliver an update on the current leading **clinical trials** showcasing **mitochondrial transfer, mutations, metabolism, quality control, biogenesis**, and **peroxidation/oxidation**, along with dedicated sessions on the significance on **informatics** and **data sharing for precision medicine**.

Join 80+ leading experts as they navigate common challenges and opportunities for treating unmet medical needs caused by mitochondrial dysfunction. **Mitobridge/Astellas, Minovia Therapeutics, Abliva, GenSight Biologics, Stealth Biotherapeutics** and many more will unite drive to better understand how to create effective and scalable mitochondrial therapies.

What previous attendees have had to say:

Great experience with outcomes that will be best understood in the next 3 month after re-connecting with some of the network

Chief Executive Officer, Minovia Therapeutics

Good overview of a developing field. Learned a lot and found colleagues that I will be reaching out to. It was definitely worthwhile attending

Director - Clinical Research, Revaliesio Corporation

Your Checklist to Advancing Therapies Targeting Mitochondria:



Mitobridge/Astellas focus on developing therapeutics modulating mitochondrial function to address various diseases, whilst reviewing the preclinical data supporting the therapeutic efficacy of BACH1 inhibitor



Minovia examine the effect of MAT on hematopoietic and the immune system, along with connecting pre-clinical and clinical data to explain mechanism of action of MAT



GenSight Biologics evaluate late-stage development of Lumevoq gene therapy and highlight key learnings



Mitokinin demonstrate how MTK458 reduces mitochondrial damage signature in multiple orthogonal models of mitochondrial disease and Parkinson's disease



Abliva provide an overview of the multiple therapeutic options for mitochondrial disease being pursued, along with presenting placebo controlled PMD patient data from their lead asset, KL1333

Your 25+ Expert Speakers

WELCOME

SPEAKERS

AGENDA

PARTNER WITH US

REGISTER YOUR PLACE



Selvaraj Nataraja
Senior Director,
Translational Research
Mitobridge/Astellas



Natalie Yivgi Ohana
Co-Founder & Chief
Executive Officer
Minovia



Magali Taiel
Chief Medical Officer
GenSight Biologics



Alexander Schueller
Founder & Chief
Executive Officer
Cellvie



Victor Shengkan Jin
Founder
Mito BioPharma



Joseph Sarret
President & Chief
Executive Officer
CohBar



Jonah Sinick
Chief Executive Officer
Equator Therapeutics



Rishi Rakhit
Director, Translational
Medicine
Mitokinin



Gino Cortopassi
Chief Executive Officer
Ixchel Pharma



Matthew Klein
Chief Development
Officer
PTC Therapeutics



Ben Albensi
Chief Scientific Officer
Mitrix Bio



Reenie McCarthy
Chief Executive Officer
**Stealth
Biotherapeutics**



Pénélope Andreu
Mitochondrial &
Muscle Biology
Amazentis/Vandria



Christopher Missling
President & Chief
Executive Officer
**Anavex Life Sciences
Corp**



Bärbel (Barb) Roher
Co-Founder & Chief
Scientific Officer
**MitoChem
Therapeutics**



Gregory Flesher
President & Chief
Executive Officer
Reneo Pharma



Ellen Donnelly
Chief Executive Officer
Abliva



Michael Fossel
President & Founder
Telocyte



Maxim Skulachev
Chief Scientific Officer
Mitotech



Daria Mochly-Rosen
The George D Professor,
Translational Medicine,
Professor, Dept Chemical
& Systems Biology
**Stanford University,
School of Medicine** &
Founder & Co-Director,
SPARK, Stanford



David Marcinek
Professor of
Radiology, Adjunct of
Bioengineering &
Laboratory Medicine
& Pathology
**University of
Washington Medical
School**



Hazel Szeto
Co-Founder & Director,
**Improving Global
Health** & Scientific
Founder
**Stealth
BioTherapeutics**



Keshav Singh
Joy & Bill Harbert
Endowed Chair & Professor
**University of Alabama,
Birmingham**
Scientific Founder &
Chief Scientific Officer
Yuva Biosciences



Dan DiPietro
Founding Partner
Aceras Bio



David Schaaf
Vice President, US
Medical Affairs, Senior
Medical Officer
Zogenix

It was an unique opportunity for us to understand and learn from several experts

Banaras Hindu University, Previous Attendee

Workshop A

10.00am-12.30pm

The Lifecycle of Mitochondria

This workshop will enable you to better understand, examine and evaluate:

- The role of mitochondria in the evolution of complex eukaryotic life
- The role of cardiolipin in determining structure and function of mitochondria
- Cardiolipin as a signaling platform for life and death
- Bacterial content released out of mitochondria are danger molecules (MitoDAMPS)

Join this workshop to help you answer the below questions and more!

- What is the fate of mitochondria or mitochondrial content released from cells?
- How can this information guide future development of mitochondrial interventions?



Hazel Szeto
Co-Founder & Director,
Improving Global Health, Inc & Scientific
Founder
Stealth BioTherapeutics

Workshop B

1.30pm-4.00pm

Navigating Funding Challenges & Opportunities when Developing Therapeutics Targeting Mitochondria for Chronic Diseases

This workshop will enable you to better understand, examine and evaluate:

- The challenges of funding development
- How drug developers can inspire and attract companies to invest in their novel development and pipeline
- How the industry can come together to overcome the paucity of funding

Join this workshop to understand how to maximize your ability to secure adequate funding for continued development of assets.

This session will be an opportunity to discuss with peers and hear the perspectives of seasoned experts in investment and funding for life sciences companies tackling key challenges to securing funding and investment for early stage development pipelines.



Dan DiPietro
Founding Partner
Aceras Bio

Informative, high quality talks and great speaker line-up

Cytokinetics Inc

Conference Day One

Wednesday, February 23



8.00 Registration, Morning Coffee & Structured Networking

8.45 Chair's Opening Remarks

Overview of the Mitochondrial Medicine Landscape

David Marcinek
Professor,
Radiology, Adjunct of
Bioengineering &
Laboratory Medicine
& Pathology
**University of
Washington Medical
School**

9.00 **Bench to Bedside - Targeting Mitochondria for Aging Skeletal Muscle**

- Discussing the role of mitochondria in chronic disease and age-related dysfunction with an emphasis on aging skeletal muscle
- Presenting new developments on mechanisms of mitochondrial aging
- Examining successes and challenges translating mitochondrial targeted interventions to human skeletal muscle aging

Selvaraj Nataraja
Senior Director,
Translational
Research
Mitobridge/Astellas

9.30 **Spotlight Session- BACH1 Inhibitor as Therapeutics for Sickle Cell Disease**

- Developing therapeutics modulating mitochondrial function to address various diseases
- Developing a BACH1 inhibitor that can regulate antioxidant response genes through Nrf2 pathway
- Reviewing the preclinical data supporting the therapeutic efficacy of BACH1 inhibitor to treat sickle cell disease

The Role of Ex Vivo Mitochondrial Transfer to Improve Stem Cell Therapy Outcomes (Mitochondrial Transfusion)

Natalie Yivgi Ohana
Co-founder & Chief
Executive Officer
Minovia

10.00 **Mitochondrial Augmentation Therapy (MAT): First Steps in Elucidating Mechanism of Action**

- Evaluating the systemic effect of MAT on different organs
- Examining the effect of MAT on hematopoietic and immune system
- Connecting pre-clinical and clinical data to explain mechanism of action of MAT



10.30 Morning Refreshments & Structured Networking Break

Alexander Schueller
Founder & Chief
Executive Officer
Cellvie

11.00 **Therapeutic Mitochondria Transplantation - A New Category of Medicines?**

- Exploring how viable mitochondria are transplanted into cells to induce the therapeutic effect and how this approach has shown great promise in ischemia-reperfusion injury
- Examining the latest insights to support the notion of augmentation and replacement, to affect the cell energy metabolism (Therapeutic Mitochondria Transplantation) as a treatment modality with broad applications
- Highlighting select challenges the field faces

Ben Albeni
Chief Scientific
Officer
Mitrix Bio

11.30 **Mitochondrial Bioreactors & Transplant Therapy for Neurodegeneration & Age-Related Diseases**

- Why is targeting the mitochondria important in disease and injury?
- What is mitochondrial transplantation/transfusion?
- Exploring new sources of mitochondria for larger-scale therapy

Conference Day One

Wednesday, February 23

The Relationship of Mitochondrial DNA (mtDNA) Mutations/Damage & Mitochondrial Reactive Oxygen Species (ROS) Dysfunction



Jonah Sinick
Chief Executive
Officer
**Equator
Therapeutics**

12.00 **Activating Native Thermogenic Pathways to Treat Metabolic Disorders**

- Reviewing the evidence linking mitochondrial thermogenesis with the reversal of metabolic diseases
- Examining the physiological mechanisms underlying thermogenic H⁺ leak through the inner mitochondrial membrane
- Presenting data on novel activators of these mechanisms



12.30 **Lunch & Structured Networking**

Gino Cortopassi
Chief Executive
Officer
Ixchel Pharma

1.30 **Fumarates for Rescue of Mitochondrial Functions**

- Demonstrating how MMF supports increased mitochondrial function through a novel MoA
- Examining how Ixchel has identified a novel MMF that has improved PK over existing fumarates
- Exploring how this molecule rescues mitochondrial function and longevity in multiple animal models of mitochondrial disease

David Schaaf
Vice President, US
Medical Affairs,
Senior Medical
Officer
Zogenix

2.00 **Development of a New Medication for the Ultra-Rare Mitochondrial Disease Thymidine Kinase 2 Deficiency Disorder (TK2d)**

- Reviewing TK2d disease whilst navigating natural history
- Evaluating the creation of NDA-supporting dataset
- Examining top-line results supporting NDA-submission

Current Progress of Mitochondrial Quality Control (MQC) Signaling Pathways Mitochondrial Biogenesis, Mitochondrial Dynamics & Mitochondrial Autophagy (Mitophagy)

Victor Shengkan Jin
Founder
Mito BioPharma

2.30 **Mitochondrial Uncoupling for Therapeutic Development in Metabolic Diseases and Cancer**

- Investigating how mitochondrial function deterioration is an important causal factor for several diseases, including NASH, type 2 diabetes, neurodegenerative diseases
- Exploring mitochondria-related metabolic changes (e.g. the Warburg Effect) and how it's essential for the transformation of normal cells to cancer cells
- Examining how mitochondrial uncoupling provides a unique opportunity for effective treatment of these major diseases through eliminating the corresponding root causes
- Presenting strategies, approaches and examples in targeting mitochondrial uncoupling for therapeutic development



3.00 **Afternoon Refreshments & Structured Networking Break**

Rishi Rakhit
Director, Translational
Medicine
Mitokinin

3.30 **Small Molecule Activator of PINK1 in Preclinical Models of Parkinson's Disease & Mitochondrial Disease**

- Examining the discovery and optimization of small molecule activator of PINK1, MTK458
- Exploring how MTK458 reduces mitochondrial damage signature in multiple orthogonal models of mitochondrial disease and Parkinson's disease
- Demonstrating pathological and functional rescue in pre-clinical alpha synuclein PFF model of Parkinson's disease

Conference Day One

Wednesday, February 23

4.00 Rejuvenating Cells via Mitophagy to Address Unmet Medical Need

Pénélope Andreu
Mitochondrial &
Muscle Biology
Amazentis/Vandria

- Examining the benefits of mitophagy induction via Urolithin A on mitochondrial function were demonstrated across a broad range of models
- A closer look at Vandria, a spin-off of Amazentis dedicated to the development of novel pharmaceuticals, possesses a growing pipeline of next generation small molecule mitophagy inducers
- Evaluating results and target pharmaceutical applications of new chemical entities

4.30 Panel Discussion: Evaluate the Current Challenges in Targeting-Mitochondria for Chronic Mitochondrial Diseases

- How can drug developers/research cut to the real barriers?
- Debate what is truly required to break through to successful treatments for mitochondrial diseases
- Understand how to make good disease models in which one can test potential therapeutic pathways



Gregory Flesher
President & Chief Executive Officer
Reneo Pharma



Keshav Singh
Joy & Bill Harbert Endowed Chair & Professor
University of Alabama, Birmingham
Scientific Founder & Chief Scientific Officer
Yuva Biosciences

5.00 Chair's Opening Remarks

5.15 End of Day 1

Extremely exciting to learn about past and present efforts in the mito field. I enjoyed the large breath of expertise and the high quality of the presentations. I particularly enjoyed the lively and informative panels

**Founder, Frederik's Foundation,
Previous Attendee**

Conference Day Two

Thursday, February 24



8.00 Morning Coffee & Structured Networking

8.45 Chair's Opening Remarks

Examine the Oxidative Phosphorylation (OXPHOS) System/ Lipid (per) Oxidation of the Mitochondria

Reenie McCarthy
Chief Executive
Officer
**Stealth
Biotherapeutics**

9.00 Mitochondria as a Target for Ophthalmic Disease

- Examining mitochondrial dysfunction as a key pathology in dry age-related macular degeneration, glaucoma, diabetic retinopathy and Fuch's corneal endothelial dystrophy
- Presenting preclinical data demonstrating elamipretide's effect in models of ophthalmic disease
- Showcasing clinical data showing that degree of baseline mitochondrial function may predict therapeutic response in patients with dry AMD
- Demonstrating clinical data which shows how mitochondrial targeted therapeutics may not only slow disease progression, but also potentially improve visual function and/or visual field

Joseph Sarret
President & Chief
Executive Officer
CohBar

9.30 Mitochondrial Derived Peptides as a Source for Novel Therapeutics

- Analyzing how the effects of some mitochondrially encoded peptides are not limited to local regulation, but have important roles to play in critical biological pathways
- Exploring CB4211, a novel analog of MOTS-c being developed for the treatment of NASH and obesity, including positive clinical data from a multi-center, randomized, double blind placebo-controlled trial
- Examining how CB5138-3 has the potential to be a differentiated therapy for the treatment of IPF and other fibrotic diseases

Matthew Klein
Chief Development
Officer
PTC Therapeutics

10.00 Designing Clinical Trials for Mitochondrial Disease Therapies

- Understanding how drug development for mitochondrial disease is fraught with challenges due to disease heterogeneity, lack of comprehensive natural history and lack of precedent of approved therapies to guide development
- Examining how careful consideration of inclusion criteria to minimize heterogeneity and enrich study participants will be most likely to respond to a therapeutic intervention which is essential
- Learning how trade-offs exist when choosing to include a limited number vs. a larger number of study sites
- Exploring how the COVID-19 pandemic has led to an evolution in study design and conduct



10.30 Morning Refreshments & Structured Networking Break

11.00 Targeting Mitochondrial Oxidative Stress in Dry Eye & Glaucoma

- Examining the role of mitochondrial oxidative stress and cardiolipin peroxidation in Dry Eye Disease and Open Angle Glaucoma
- Presenting late-stage clinical data from VISTA-1 and VISTA-2 clinical studies of SkQ1 ophthalmic solution in Dry Eye disease
- Showcasing early-stage clinical data for SkQ1 ophthalmic solution in Glaucoma and therapeutic potential of a mitochondria-targeted IOP lowering drug

Maxim Skulachev
Chief Scientific
Officer
Mitotech

Conference Day Two

Thursday, February 24

11.30 Mitochondrial Protective Therapeutics for Neurodegenerative & Metabolic Diseases



Bärbel (Barb) Roher
Co-founder & Chief
Scientific Officer
**MitoChem
Therapeutics**

- Presenting mitochondrial dysfunction as a hallmark mechanism across rare and challenging diseases
- Examining the importance of mitochondrial homeostasis in high energy systems - CNS, retina, heart, skeletal muscle, kidney
- Reviewing a novel small molecule approach to treating mitochondrial dysfunction
- Analyzing preclinical data in ophthalmic indications of retinitis pigmentosa and dry age-related macular degeneration

Daria Mochly-Rosen
The George D
Professor,
Translational
Medicine, Professor,
Dept Chemical
& Systems
Biology **Stanford
University**, School
of Medicine and
Founder
& Co-Director,
SPARK, Stanford

12.00 Inhibition of Neuroinflammation & Neurodegeneration by a Selective Inhibitor of Mitochondrial Pathological Fission

- Examining mitochondrial dysfunction as a key pathology in ALS
- Evaluating how excessive mitochondrial fragmentation, seen in patient-derived cells and in a mouse model of the disease, can be blocked by inhibiting the interaction of the mitochondrial fission enzyme, dynamin related protein 1 (Drp1), and one of its adaptors on the mitochondrial surface, Fis1
- Observing how P110, a heptapeptide inhibitor of this Drp1/Fis1 interaction that we have rationally designed, selectively inhibits mitochondrial fragmentation and dysfunction in the above models, inhibits microglial and astrocytes activation and neuroinflammation and improves the clinical symptoms in ALS mice, without causing any toxicity in healthy mice



12.30 Lunch & Structured Networking

Michael Fossel
President & Founder
Telocyte

1.30 Aging Mitochondria, Aging Cells, & Human Disease

- Understanding how cell aging underlies age-related human disease
- Exploring how mitochondrial dysfunction is a prominent - although not the sole - feature of cell aging
- Examining the key question that still remains the cause of - the “upstream” events behind - mitochondrial dysfunction
- Understanding the underlying processes presents an optimal point of clinical intervention

Mitochondrial Gene Therapy & Editing: A Promising Therapeutic Technology

Magali Taiel
Chief Medical Officer
GenSight Biologics

2.00 Lumevoq Gene Therapy in Leber Hereditary Optic Neuropathy (LHON):

- Exploring the main clinical aspects of LHON, a rare and acute mitochondrial disease
- Evaluating late-stage development of Lumevoq gene therapy
- Discussing on regulatory pathways
- Highlighting key learnings

Precision/Patient-Focused Medicine - Standardizing & Improving Patient Outcomes

Christopher Missling
President & Chief
Executive Officer
**Anavex Life
Sciences Corp**

2.30 Using Precision Medicine in Clinical Trials to Advancing Therapeutics for both Degenerative & Rare Mitochondrial Diseases

- Assessing clinical data with biomarker-correlated outcomes of ANAVEX2-73 (blarcamesine) in Alzheimer's, Parkinson's, and Rett Syndrome
- Reviewing mechanistic analysis of involvement of mitochondrial function

Conference Day Two

Thursday, February 24



3.00 Afternoon Refreshments & Structured Networking Break

Ellen Donnelly
Chief Executive
Officer
Abliva

3.30 Patient-Focused Drug Development for Mitochondrial Disease

- Highlighting the impact of patient input on research and development at Abliva
- Providing an overview of the multiple therapeutic options for mitochondrial disease being pursued at Abliva
- Presenting placebo controlled PMD patient data from our lead asset, KL1333

4.00 Panel Discussion: Emerging Treatments for Chronic Diseases when Targeting Mitochondria-Therapeutic Avenues, Clinical Trials & Future Direction

- Examining the current treatment options and emerging targeted therapies
- How can the industry design novel therapeutic strategies for the treatment of chronic diseases when targeting mitochondria?
- Exploring clinical trial development and the continued impact of the pandemic on on-going clinical trials



Gregory Flesher
President & Chief Executive Officer
Reneo Pharma



Keshav Singh
Joy & Bill Harbert Endowed Chair & Professor
University of Alabama, Birmingham
Scientific Founder & Chief Scientific Officer
Yuva Biosciences

Panel

4.45 Chair's Opening Remarks

5.00 End of Summit

|| A great deep dive in the biology of mitochondria and the current therapeutic approaches ||

**Business Development, Amazentis,
Previous Attendee**

The **2nd Annual Mitochondria-Targeted Drug Development Summit** will unite leading experts and top organizations in Boston, to accelerate the discovery and development of novel drugs targeting mitochondrial functions for chronic diseases.

This is your opportunity to collaborate with key decision-makers to overcome their current challenges halting further progress in this emerging space.

As drug developers targeting mitochondria dysfunction mature and progress into clinical development, they are currently seeking help with:



Contract Research

Can you accelerate and support preclinical and clinical R&D biopharma to help make therapeutics for (mito-targeted) chronic diseases a reality for patients?



Preclinical Services

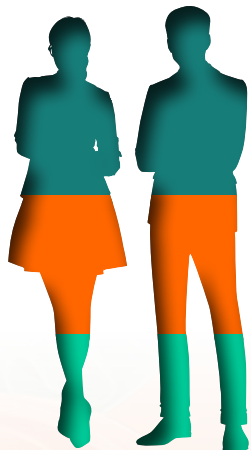
Can you provide novel solutions to existing preclinical model challenges to develop effective therapeutics that target mitochondria for chronic diseases?



Novel Research Tools, Technology, Products & Assays

Do you have equipment or services that can allow developers to run mitochondrial function assays, improve live cell imaging, provide cell-based phenotypic testing technologies?

Attendance by Seniority

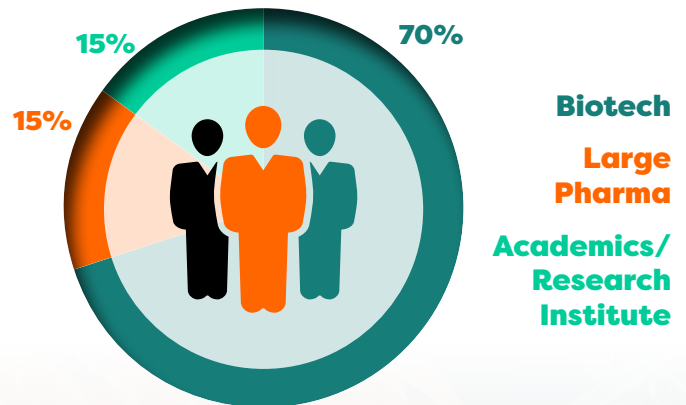


CEO/CMO/Founder = 40%

Director/VP = 30%

Scientist/Researcher = 30%

Attendance by Sector



* Audience breakdown statistics based on the 1st Mitochondria-Targeted Drug Development Summit

Having the second speaker slot on the opening day was a big plus. The scientific presentations were excellent, exceeding my expectations

Founder, Biolog Inc, Previous Sponsor

GET INVOLVED



Adam Mayor

Partnerships Director

Tel: (+1) 6174554188

Email: sponsor@hansonwade.com

Join Us in Boston!

As the world begins to re-open and in-person events become a reality, the inaugural **Mitochondria-Targeted Drug Development Summit** is committed to bringing you expert insights and industry connections back in a face-to-face capacity. Through liaising closely with the community, we have equipped ourselves with the necessary knowledge to make the right decision to deliver a high-quality event for the industry in a safe capacity, and we hope you and your team will join us for the real event experience!

BOOK WITH CONFIDENCE

We are planning on running this as an in-person event in Boston. However, in the result that a high-quality physical event is not able to be delivered, we will revert to our tried and tested virtual platform to deliver the conference in a digital format. Our risk-free booking policy means that you will be covered if the switch to a digital event takes place.

To provide you with certainty, we are committed to ensuring risk-free booking for you and your team. If there are changes in the event, or your own circumstances, we will be able to discuss suitable options with you.

See our website for full Terms and Conditions

Our Commitment to Running a Safe Event

We will be doing everything we can to create the best experience possible for you, while ensuring the safety and welfare of all our attendees remains paramount. We will adhere to the national, local and hotel specific guidance and regulations to ensure safety and hygiene measures are in place. What's more, we have also produced Hanson Wade's 6Ws of what to expect when attending our in-person events:



Wear a Lanyard

Pick a Lanyard that respects your boundaries;
Green: Let's chat < 1 meter,
Orange: Let's chat > 1 meter, Red: Let's chat > 2 meters



Wear a Face Covering

Protect yourself and others. Wear over nose, mouth and chin for optimum safety. Only individuals who are medically exempt will not be required to wear a face covering



Wash Your Hands

Wash your hands for at least 20 seconds



Watch Your Distance

Please be mindful of your distance from others



Wellbeing Check

Safety for you and your peers. Complete the survey for admission onsite



Walk With The Flow

Follow the arrows & walk with the flow

Your Health & Safety

Your health, safety and well-being remains our highest priority. Therefore, all attendees will be required to complete a health declaration prior to attending the event. As part of this, attendees must declare that they are either fully vaccinated and /or have completed a negative Lateral Flow Test or PCR Test within 48 hours the event*. For further information around Health and Safety onsite, please visit our FAQ [here](#).

*Please note, this is subject to change at any time without prior notice.

Ready to Register?

3 Easy Ways To Book

-  www.mitochondria-targets.com/take-part/register
-  Tel: (+1) 617 455 4188
-  Email: register@hansonwade.com

- 1** **SAVE** valuable time and resources by learning how the leading companies in the space have **optimized discovery, translational and analytical** approaches to target mitochondria
- 2** **GAIN** first-hand insights from senior experts already navigating and overcoming challenges in **advancing mitochondria targeted therapeutics**
- 3** **FORM** lasting connections by **engaging directly with colleagues from the leading pharma and biotech companies** actively researching and developing mitochondria-targeted therapeutics in an in-person environment

Secure Your Place

Drug Developer	Register & Pay By Friday, November 19 Save Up To \$1,000	On The Door
Conference + 2 Workshops	\$3,197	\$4,197
Conference + 1 Workshop	\$2,748	\$3,598
Conference Only	\$2,299	\$2,999

Academics	Register & Pay By Friday, November 19 Save Up To \$1,000	On The Door
Conference + 2 Workshops	\$2,597	\$3,597
Conference + 1 Workshop	\$2,248	\$3,098
Conference Only	\$1,899	\$2,599

Service Provider	Register & Pay By Friday, November 19 Save Up To \$1,000	On The Door
Conference + 2 Workshops	\$3,997	\$4,997
Conference + 1 Workshop	\$3,448	\$4,298
Conference Only	\$2,899	\$3,599

Team Discounts

- **10% discount – 3 Attendees**
- **15% discount – 4 Attendees**
- **20% discount – 5+ Attendees**

Please note that discounts are only valid when three or more delegates from one company book and pay at the same time.

Discounts cannot be used in conjunction with any other offer or discount. Only one discount offer may be applied to the current pricing rate.

Contact: register@hansonwade.com

Venue

Hyatt Regency Boston / Cambridge

575 Memorial Dr, Cambridge, MA 02139, United States

For further information or assistance, please visit:

<https://www.hyatt.com/en-US/hotel/massachusetts/hyatt-regency-boston-cambridge/bosrc>

TERMS & CONDITIONS

Full payment is due on registration. Cancellation and Substitution Policy: Cancellations must be received in writing. If the cancellation is received more than 14 days before the conference attendees will receive a full credit to a future conference. Cancellations received 14 days or less (including the fourteenth day) prior to the conference will be liable for the full fee. A substitution from the same organization can be made at any time.

Changes to Conference & Agenda: Every reasonable effort will be made to adhere to the event programme as advertised. However, it may be necessary to alter the advertised content, speakers, date, timing, format and/or location of the event. We reserve the right to amend or cancel any event at any time. Hanson Wade is not responsible for any loss or damage or costs incurred as a result of substitution, alteration, postponement or cancellation of an event for any reason and including causes beyond its control including without limitation, acts of God, natural disasters, sabotage, accident, trade or industrial disputes, terrorism or hostilities, sabotage, accident, trade or industrial disputes, terrorism or hostilities.

Data Protection: The personal information shown and/or provided by you will be held in a database. It may be used to keep you up to date with developments in your industry. Sometimes your details may be obtained or made available to third parties for marketing purposes. If you do not wish your details to be used for this purpose, please write to: Database Manager, Hanson Wade, Suite A, 6 Handuras Street, London EC1Y 0TH